

voters' pamphlet



August 27, 2024 Special Election

Index to Voters' Pamphlet

This Voters' Pamphlet is provided to give voters additional information on these measures. Your ballot will contain only those issues for which you are eligible to vote, based on where you live. The text of the measures are printed as submitted.

Measures

9-171 Black Butte Ranch Rural Fire Protection District - Five-year Local Option Tax for Fire and Emergency Operations.	9-5
9-172 Deschutes County Special Road District #8 - Five Year Local Option Levy for District Road Improvements.....	9-6
Voting Information	9-2
Translation Information	9-3
How To Cast Your Vote	9-4
Frequently Asked Questions	9-7

Ballot Drop Site Locations

Open Friday, August 9: Available 7 days a week
Election Day, Tuesday, August 27: open until 8 pm

Bend	La Pine	Sisters
Deschutes Services Center 1300 NW Wall St, Bend <i>(Walk-up & Drive-through exterior Drop Boxes located on west side of building)</i>	La Pine Public Library 16425 1st St, La Pine <i>(Box located at 1st St & Huntington Rd)</i>	Sisters City Hall 520 E Cascade Ave, Sisters <i>(Box located in front of City Hall)</i>

Mail your voted ballot in your postage-paid return envelope by **8 pm, Tuesday, August 27, 2024**. Remember to sign your ballot envelope. Ballots that are mailed, postmarked by the United States Postal Service (USPS) by 8 pm on Election Day and received by the Clerk's Office by September 3, 2024 will be accepted.

County Clerk's Office, 1300 NW Wall St, Suite 202 (2nd Floor), Bend
Monday through Friday, 8 am to 5 pm | Election Day, 7 am to 8 pm
-- Voting Booths Available --

Voting Information

Registering to Vote

To be eligible to vote in the August 27, 2024 Special Election, a completed voter registration card must be postmarked by Tuesday, August 6, 2024.

To register to vote in Oregon, you must be:

1. A resident of Oregon.
 2. A United States citizen.
 3. At least 18 years old by Election Day.
-

You must update your registration if:

1. Your residence or mailing address changes.
2. Your name changes.
3. You wish to change your party affiliation.

Important Note: If you have moved or changed your name and you have not yet updated your registration, you are still eligible to vote. Call the Deschutes County Elections Office at (541) 388-6547 or email at elections@deschutescounty.gov for further information.

Contact:

Deschutes County Elections Office
(541) 388-6547 Deschutescounty.gov/elections
elections@deschutescounty.gov
1 (866) ORE-VOTES (se habla Español)
www.oregonvotes.gov
TTY 1 (800) 735-2900

Disclaimer:

Information provided in statements or arguments by a candidate, a political party, an assembly of electors, or a person supporting or opposing a measure have not been verified for accuracy by Deschutes County.

Voters with disabilities:

If you need assistance with voting or casting your ballot, call the Deschutes County Elections Office at (541) 388-6547. We will provide two staff to assist you in voting. You may also authorize a friend, family member, or other trusted person, who are not affiliated with your employer or union, to assist you.

An audio edition of the Voters' Pamphlet is available for download on our website. Voters may also order by contacting Independent Living Resources at (503) 232-7411, info@irl.org, or TTY (503) 232-8408.

Voting Instructions

Your Ballot Packet will contain the following items:

- Printed ballot
 - Postage-paid return envelope to be signed
 - Voters' Pamphlet
-

Examine your official ballot and vote it:

Examine your official ballot and locate the candidate or measure response oval of your choice for each contest. To vote, you must fill the oval (●) completely with a pen (black or blue ink) next to your choices. Do not use a felt tip pen.

Review your ballot:

Ensure you correctly marked your choice for each contest. Your official ballot may contain contests/measures printed on both sides of your ballot.

Prepare to return your ballot:

Place your ballot in the postage-paid return envelope. Election staff will ensure the secrecy of your ballot. Read the voter's statement on the return envelope and sign in the signature box.

Signing your ballot return envelope:

Your ballot will not be counted if the return envelope is not signed. Every signature is checked against the registration signature on file and the signature must match for the ballot to be counted.

Return your ballot:

- **By mail:** Return your ballot in your signed and sealed ballot return envelope. A stamp is not required. Mail your voted ballot no later than Tuesday, August 27, 2024. Ballots that are mailed, postmarked by the United States Postal Service (USPS) by 8 pm on Election Day and received by the Clerk's Office by Tuesday, September 3, 2024 will be accepted.
 - **At any official drop site:** Deliver the signed and sealed ballot return envelope to an official drop site no later than 8 pm on Election Day. Postage is not required.
-

Remember, review both sides of your ballot. Some ballots may have contests/measures on both sides.

Translation Information

Selected portions of this county voters' pamphlet are available in Simplified Chinese, French, Korean, Russian, Spanish, Tagalog, and Vietnamese. These translations can be found online at **oregonvotes.gov/DeschutesVP**

本县选民手册的部分内容提供简体中文版本。可以访问 **oregonvotes.gov/DeschutesVP** 获取译本。

Des sections sélectionnées des brochures de l'électeur de ce comté sont disponibles en français. Ces traductions peuvent être consultées en ligne à l'adresse suivante : **oregonvotes.gov/DeschutesVP**

주 유권자 팜플렛의 선택된 부분은 한국어 준비되어 있습니다. 번역은 온라인 **oregonvotes.gov/DeschutesVP** 에서 찾아볼 수 있습니다.

Отдельные части брошюр избирателей этого округа доступны на русском языке. С данными переводами можно ознакомиться в Интернете по адресу: **oregonvotes.gov/DeschutesVP**

Algunas secciones de este folleto para votantes del condado están disponibles en español. Estas traducciones están disponibles en línea en **oregonvotes.gov/DeschutesVP**

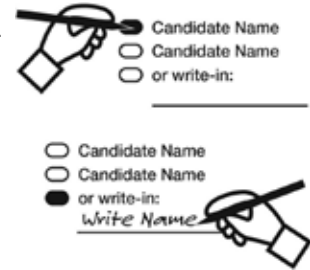
Ang mga piling bahagi ng mga pamphlet na ito para sa mga botante ng county ay mababasa sa Tagalog. Makikita online ang mga pagsasaling-wikang ito sa **oregonvotes.gov/DeschutesVP**

Các phần được chọn trong tập thông tin cho cử tri quận này có bản ngôn ngữ tiếng Việt. Bản dịch có thể xem trực tuyến tại **oregonvotes.gov/DeschutesVP**

How To Cast Your Vote

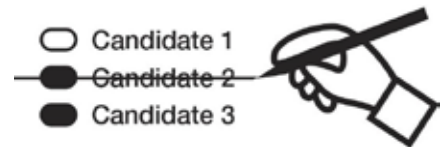
1 Complete your ballot

- To vote, completely fill in the oval next to your choice with a pen (black or blue ink). Do not use a felt tip pen.
- To vote for a person not on the ballot, fill in the oval next to the “write-in” line, then neatly write the name of the person on the line provided. Do not write a candidate’s name that already appears on the ballot.
- You do not have to vote on all contests. Those you do vote on will still count.



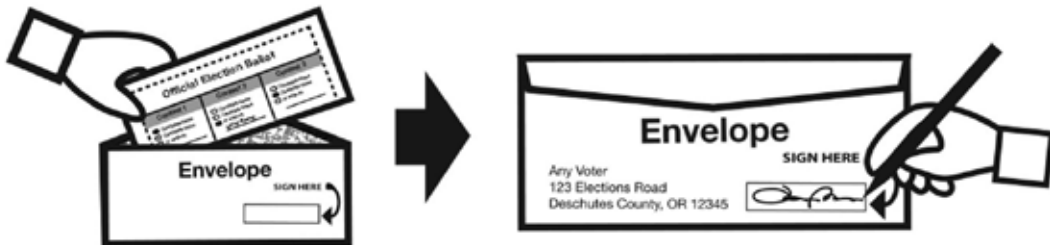
2 Check for errors

- If you vote for more options than are allowed, your vote **will not count** for that contest.
- If you make a mistake on your ballot, you may make your changes on the ballot. Draw a line through the entire candidate name or measure response. You then have the option of making another choice.
- Contact Deschutes County Elections Office at (541) 388-6547 to request a replacement ballot if:
 - you make a mistake that you cannot correct
 - your ballot is damaged or spoiled
 - your ballot is lost



3 Insert ballot & sign your return envelope

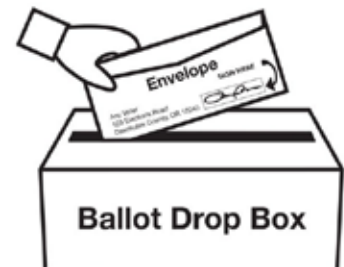
- Insert only your voted ballot (not another person’s ballot) inside your ballot return envelope. *(If we receive an envelope with more than one ballot inside, all enclosed ballots will be rejected and not counted).*
- You must sign your ballot return envelope or **your vote will not count.**



- The signature on each voter’s ballot return envelope is verified against the voter’s signature on file. The signatures must match before a ballot can be counted. If your signature has changed, please update your voter registration.

4 Return your ballot

- By mail:** Return your ballot in your signed and sealed ballot return envelope. Postage is not required. Mail your voted ballot no later than Tuesday, August 27, 2024. Ballots that are mailed, postmarked by the United States Postal Service (USPS) by 8 pm on Election Day and received by the Clerk’s Office by Tuesday, September 3, 2024 will be accepted.
- At any official drop site:** Deliver the signed and sealed ballot return envelope to an official drop site no later than 8 pm on Election Day. Postage is not required.



Measure 9-171 Black Butte Ranch Rural Fire Protection District

Ballot Title

9-171

Five-year Local Option Tax for Fire and Emergency Operations.

QUESTION: Shall District impose \$2.00 per \$1,000 of assessed value for five years for general operations beginning 2025-2026?

This measure may cause property taxes to increase more than three percent.

SUMMARY: This measure may be passed only at an election with at least 50 percent voter turnout.

Black Butte Ranch Rural Fire Protection District (the "District") provides fire and emergency medical services to its residents 24 hours a day, 7 days a week. Services are provided by a mix of paid staff and volunteers.

If adopted, this measure would provide for local option tax operating revenue at a rate of \$2.00 per \$1,000 of assessed value for five years, beginning July 1, 2025. The current levy of \$1.76 per \$1,000 of assessed value expires June 30, 2025, and on expiration would be replaced by this levy.

Revenues from this operating levy would enable the district to continue supporting the annual costs of 24/7 fire and emergency medical service operations by maintaining current service levels. The District's permanent tax rate covers approximately 45% of the District's budget. This levy and other resources would cover the remaining 55%. Without funds from a local option tax, the District would have to cut back on both services and service levels.

The proposed rate will raise approximately \$1,638,480 in 2025-2026, \$1,687,635 in 2026-2027, \$1,738,264 in 2027-2028, \$1,790,412 in 2028-2029, and \$1,844,124 in 2029-2030 for a total of \$8,698,915.

or about \$91.67 per month.

This levy would replace the current levy ending June 30, 2025 of \$1.76 per \$1,000 of assessed value of property, resulting in a net increase on a \$550,000 home of \$0.24 per \$1,000 which computes to an estimated annual increase of approximately \$132.00 per year or about \$11.00 per month.

The Oregon Constitution limits the annual increase of a property's maximum assessed value to three percent over the previous tax year. Because Black Butte Ranch is nearly built to capacity, there is minimal or no growth in tax revenues from new construction or expansion. The cost of District operations is growing faster than any increase in property tax revenues. With operations increasing at a greater rate than property assessed values, coupled with little growth, the District is not able to maintain its current level of service with existing revenue sources.

This local option tax will fully fund our current minimum staffing and operations for five years and avoid a reduction or deletion of services. Without revenue from this local option tax, the District would be forced to reduce service and service levels.

(This information furnished by Dan Tucker, Black Butte Ranch RFPD.)

Explanatory Statement

Black Butte Ranch Rural Fire Protection District (the "District") provides fire and emergency medical services to its residents 24 hours a day, 7 days a week. The District provides firefighting (structural and wildland), emergency medical services, vehicle extrication and fire prevention services to the 3 square miles that makes up Black Butte Ranch. In addition, District personnel provide advanced life support emergency medical services, vehicle extrication, and ambulance transport services to our ASA (Ambulance Service Area) of over 12 square miles.

The District has nine employees, including three (3) Firefighter-Paramedics, three (3) Shift Captain-Paramedics, a Deputy Fire Chief, a Fire Chief, and an Administrative Assistant. The District also has several Resident Volunteers and occasionally uses seasonal, part-time help, and temporary employees.

Our mission is to safeguard the lives and property of our community through excellence in fire suppression, emergency medical care, public education, and professional development. We are committed to working collaboratively with our fire service partners to ensure the highest level of service for all citizens and visitors of our great community.

The District's current permanent tax rate is \$1.4677 per \$1,000 of assessed value of property in the District. The District has proposed a local option tax to increase its budget for operations. The local option tax would be \$2.00 per \$1,000 of assessed value of property. For a home having an assessed value of \$550,000 the estimated annual cost would be approximately \$1,100 per year

Measure 9-172 Deschutes County Special Road District #8

Ballot Title

9-172

Five Year Local Option Levy for District Road Improvements

QUESTION: Shall District levy \$2.80 per \$1,000 of assessed property value for five years beginning 2024-25 to construct road improvements? This measure may cause property taxes to increase more than three percent.

SUMMARY: This measure may be passed only at an election with at least 50 percent voter turnout. Special Road District #8 was created to construct road improvements financed by assessments against 556 district properties. The District's general fund covers operating expenses, insurance, road repairs, grading, snow removal, safety and traffic control signs, and fire break/vehicle safety corridor for 10.85 miles of road.

It has been over 20 years since surface gravel has been added to the roads. Gravel and fuel costs have increased substantially over the past three years. The District estimates a cost of \$800,000 for surface gravel and compaction of the 10.85 miles of road. The District's current permanent tax rate generates approximately \$90,000 annually. To construct needed road improvements, the District proposes a levy of \$2.80 per \$1,000 of assessed value for five consecutive years beginning 2024-25. This levy will allow sufficient revenue for District to repair all roads to proper grade, crown, and surface gravel.

This measure is estimated to generate revenue of approximately \$160,754 in 2024-25; \$166,379 in 2025-26; \$172,203 in 2026-27; \$178,228 in 2027-28; and \$184,467 in 2028-29. The total estimated revenue is \$862,031.

Additional information on our website [RD8.SpecialDistrict.org](https://rd8.SpecialDistrict.org).

compacted to bring our roads up to proper grade and crown. This will help with preventing large puddles, potholes, and the breakdown of the road surface. The revenue may also allow for periodic application of dust abatement products. For more information see District website: <https://rd8.SpecialDistrict.org/>

(This information furnished by Melanie Butler, Secretary, Board of Directors, Special Road District #8.)

Explanatory Statement

Special Road District #8 ("District") was created to construct road improvements financed by special assessments against benefited properties. The District's general fund pays for operating expenses, insurance, road repairs, grading, snow removal, safety and traffic control signs, and fire break/vehicle safety corridor for 10.85 miles of road within the District.

The District's roads support heavy traffic from District residents, nearby residents, and people accessing BLM land and the Deschutes River to our West. Keeping the roads in good repair requires regular application of gravel. The District has not graveled all the roads for over 20 years. Further, residents within the District are requesting the application of dust abatement.

When the District was formed the Deschutes County Tax Assessor set a permanent tax rate of \$1.6239 per \$1,000 of tax assessed value. This rate is a permanent rate that can only be changed through approval by a vote of the people of the State of Oregon in a statewide election. With increased gravel, fuel, and heavy machinery costs, the District estimates a cost of \$800,000 for surface gravel and compaction of the 10.85 miles of the road in the District. The District's current permanent tax rate is generating only approximately \$90,000 annually. To add surface gravel to all the District's roads, a levy is proposed of \$2.80 per \$1,000 of assessed value for five consecutive years beginning 2024-25.

This measure is estimated to generate between \$160,750 and \$184,500 per year for an estimated total revenue of \$860,000 over the five-year period. This measure would allow the District to purchase surface gravel and pay to have it spread, leveled, and

Where do I vote?

In Oregon, we vote by mail. There are no polling places. Instead you can vote anywhere you choose.

If you're registered to vote by **August 6**, your ballot will be mailed on **August 7**. Our office will mail it to the address in your voter registration record.

If you don't receive your ballot by **August 14**, call our office.

What if I've moved?

Ballots are not forwardable. To receive your ballot update your voter registration information at oregonvotes.gov/myvote.

If election day is less than 5 days away, call our office for instructions on how to get your ballot.

How can I get my ballot early?

If you will be away from your home on election day, update your voter registration information at oregonvotes.gov/myvote. To request an absentee ballot, enter your absentee mailing address and how long you will be there.

Is the voters' pamphlet translated into other languages?

Yes. Portions of the voters' pamphlet are available online in:

Arabic, Chinese (Simplified), French, German, Japanese, Korean, Marshallese, Portuguese, Russian, Spanish, Tagalog, Thai, Ukrainian, and Vietnamese.

You can find these translations online at: oregonvotes.gov/voterspamphlet.

How do I complete my ballot?

Your ballot packet will include instructions on how to complete and return your ballot. Follow the instructions!

What if my dog eats my ballot?

If your ballot is lost, destroyed, or damaged in a way that stops you from voting, call our office and ask for a replacement ballot.

Do I have to vote on everything?

No. Your ballot will still be counted, even if you don't vote for every contest or measure on it.

Can I change how I voted?

If you have mailed or dropped off your ballot, your vote cannot be changed. If you still have your ballot, follow the instructions that were sent with your ballot.

How do I return my ballot?

You can return your ballot by mail, no stamp needed. If you mail your ballot, it must be postmarked by USPS on or before **8 pm on August 27**.

Or return your ballot to any open official drop box. You can find the nearest drop box, along with a map of how to get there, at www.deschutes.org/clerk/page/ballot-drop-box-locations or by contacting our office.

Our office is open election day from 7 am to 8 pm.

Do I have to sign my ballot return envelope?

For your vote to count, yes. Your signature is a security measure used to verify your identity. You're the only person who can sign your ballot return envelope. Power of Attorney documents do not apply to voting.

If you cannot sign your name, contact our office for more information.

Your ballot is only counted if the signature on the ballot return envelope matches signatures in your voter registration record.

If your signature does not match or you forget to sign the envelope, we will notify you. You will have until 21 days after the election to prove you were the one who signed the envelope.

If my name is on the ballot return envelope, is my vote really secret?

Yes. After signature verification, your ballot is separated from the ballot return envelope before it is unfolded and reviewed.

Was my ballot counted?

As a registered voter, track the status of your ballot at oregonvotes.gov/myvote.

When will election results be known?

Initial results are released beginning at **8 pm, August 27** and will continue to be updated through election night and the days following.

Between election night and the date the election results are certified, the unofficial results reported on www.deschutescounty.gov/ElectionResults will change. This change represents ballots that were postmarked by 8 pm on election night, being received and counted.

Final results, especially for close contests, may not be known until the election is certified and the official abstract of votes is published. Final certified results will be available 37 days after the election.

Do I need a provisional ballot?

If your eligibility to vote can't be determined you will be issued a provisional ballot.

To obtain a provisional ballot, visit our office [in person](#).

Your provisional ballot will only be counted if you are determined to be eligible to vote.

How do I file a complaint?

If you believe Oregon election law has been broken, and are an Oregon registered voter, you can ask the Elections Division to investigate. Anonymous requests will not be investigated.

You can find more information and submit a complaint for Elections Division investigation at oregonvotes.gov under the "get involved" section.