



**ADDENDUM NO. 1**

**PAVING OF POWELL BUTTE HWY: MCGRATH RD TO US 20  
AND NELSON RD: POWELL BUTTE HWY TO DICKEY RD**

The Bidding Documents for the PAVING OF POWELL BUTTE HWY: MCGRATH RD TO US 20 AND NELSON RD: POWELL BUTTE HWY TO DICKEY RD project are amended as follows:

**PROJECT PLANS**

- *Replace Pages 1, 5, 6 and 11 with the attached.*

**SCHEDULE OF BID ITEMS**

- *Replace the Schedule of Bid Items (Page B4) with the attached.*

The Bidding Documents for the PAVING OF POWELL BUTTE HWY: MCGRATH RD TO US 20 AND NELSON RD: POWELL BUTTE HWY TO DICKEY RD project are amended as described above.

\_\_\_\_\_  
Cody Smith, PE  
County Engineer/Assistant Director

\_\_\_\_\_  
February 7, 2025  
Date

**THIS ADDENDUM, EXCLUDING ATTACHMENTS, SHALL BE SIGNED AND SUBMITTED WITH THE BID PROPOSAL BY THE BIDDER.**

I acknowledge receipt of Addendum No. 1.

\_\_\_\_\_  
BIDDER NAME

\_\_\_\_\_  
SIGNATURE OF BIDDER

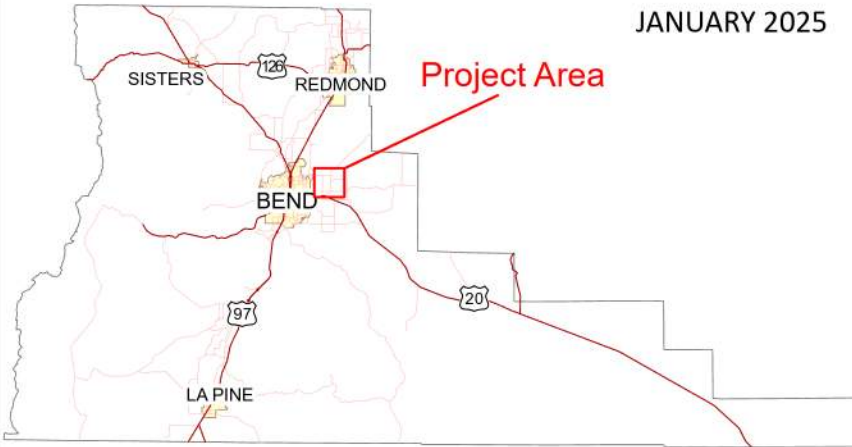
\_\_\_\_\_  
Date

# DESCHUTES COUNTY ROAD DEPARTMENT

PLANS FOR

## PAVING OF POWELL BUTTE HWY: MCGRATH RD TO US 20 AND NELSON RD: POWELL BUTTE HWY TO DICKEY RD

JANUARY 2025

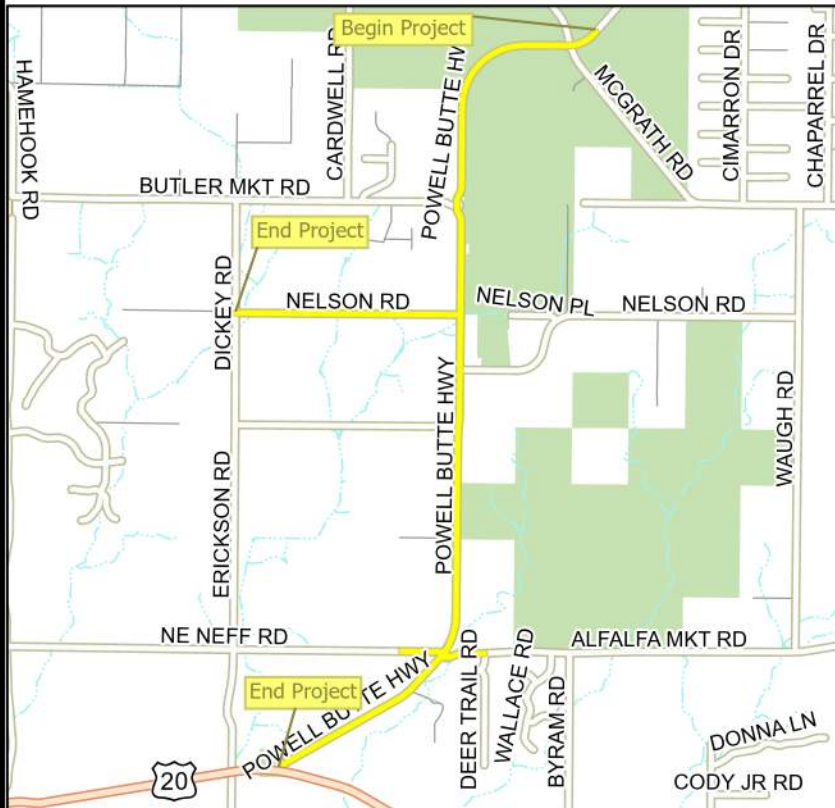


### INDEX OF SHEETS

Sheet #	Description
1	COVER SHEET
2	TYPICAL SECTION
3	DETAILS
4	DETAILS
5	PLAN---STA "P" 0+00 TO "P" 15+00 <span style="border: 1px dashed red; padding: 2px;">▲</span>
6	PLAN---STA "P" 15+00 TO "P" 30+00
7	PLAN---STA "P" 30+00 TO "P" 45+00
8	PLAN---STA "P" 45+00 TO "P" 60+00
9	PLAN---STA "P" 70+00 TO "P" 85+00
10	PLAN---STA "P" 85+00 TO "P" 100+00
11	PLAN---STA "P" 100+00 TO "P" 115+00
12	PLAN---STA "P" 115+00 TO "P" 130+00
13	PLAN---STA "P" 130+00 TO "P" 145+00
14	PLAN---STA "P" 145+00 TO "P" 160+00
15	PLAN---STA "P" 160+00 TO "P" 175+00
16	PLAN---STA "P" 175+00 TO "P" 190+00
17	PLAN---STA "P" 190+00 TO "P" 205+00
18	PLAN---STA "P" 205+00 TO END
19	PLAN---STA "NF" 0+00 TO "NF" 7+00 STA "A" 0+00 TO "A" 8+00 STA "RAB" 0+00 TO 4+40
20	PLAN---STA "N" 0+00 TO "N" 12+00
21	PLAN---STA "N" 12+00 TO "N" 24+00
22	PLAN---STA "N" 24+00 TO "N" 36+00
23	PLAN---STA "N" 36+00 TO "N" 48+00
24	PLAN---STA "N" 48+00 TO END
25	STRIPING DETAIL - MCGRATH RD INTERSECTION
26-28	TRAFFIC CONTROL PLANS

### OREGON STANDARD DRAWING NO.

TM500-503	PAVEMENT MARKING STD DETAIL BLOCKS
TM515	PAVEMENT MARKERS
TM517	RECESSED PAVEMENT MARKERS
TM521	DURABLE & HIGH PERF. PVMT. MARKINGS
TM530	INTERSECTION PAVEMENT MARKINGS
TM531	TURN ARROW MARKING DETAILS
TM539	MEDIAN & LEFT TURN DETAILS
TM560	ALIGNMENT LAYOUT: GENERAL
TM561	ALIGNMENT LAYOUT: LEFT TURN LANE
TM570	TRAFFIC DELINEATORS
TM571	TRAFFIC DELINEATORS STEEL POST DETAILS
TM576	TRAFFIC DELINEATOR INSTALLATION
TM800	TABLES, ABRUPT EDGE AND PCMS DETAILS
TM821	TEMPORARY SIGN SUPPORTS
TM822	TEMPORARY SIGN SUPPORTS
TM850	2-LANE, 2-WAY ROADWAYS
TM855	2-LANE, 2-WAY ROADWAYS



### LOCATION MAP

NOT TO SCALE

- Project Centerline
- Canals
- County Routes
- Public Lands
- State Highway
- Road Centerlines



**REVISIONS:**  
▲ UPDATE STATION NUMBERS



## ROAD DEPARTMENT

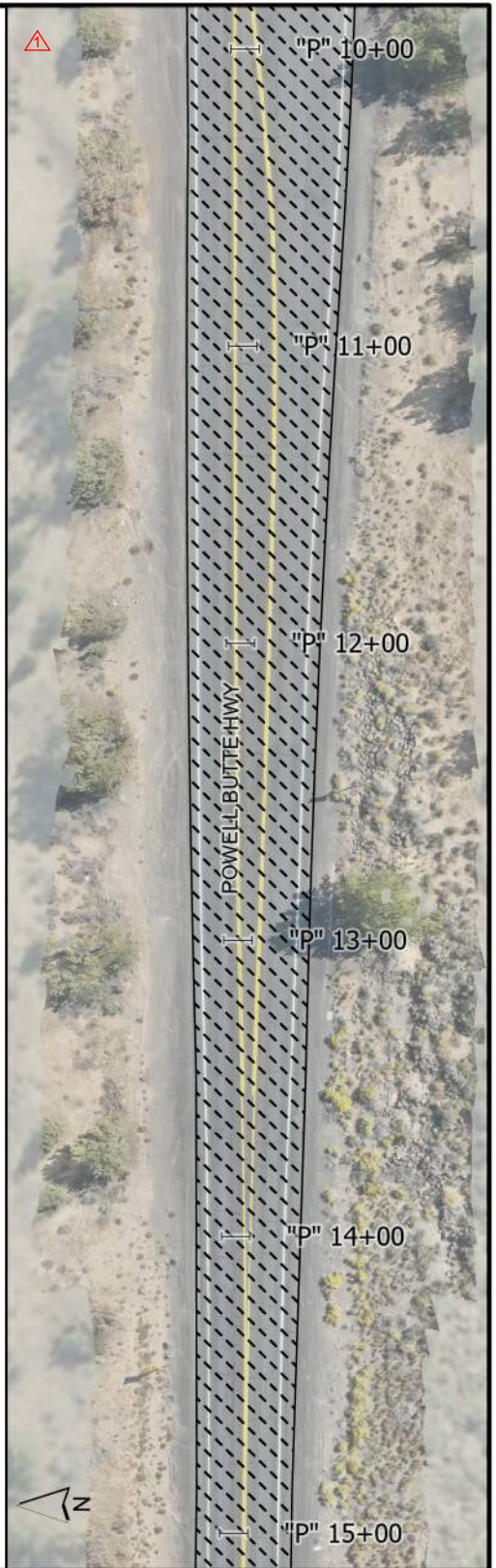
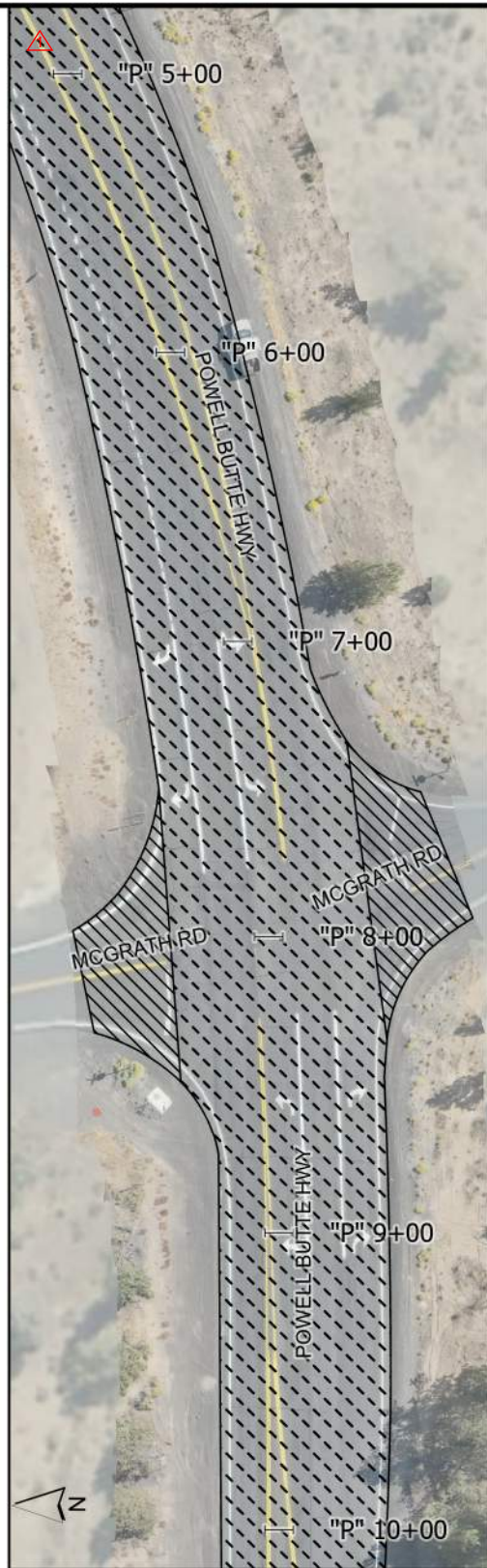
TITLE:  
COVER SHEET

SHEET NO:  
1 of 28

DATE:  
2/6/2025

SCALE:  
N.T.S.

DRAFTER: R. PINKSTON,  
B. WRUCK  
REVIEWED BY: C. SMITH



**LEGEND**

 3" INLAY, FULL-WIDTH  
(SEE TYPICAL SECTION, SHEET 2)

 ASPHALT APPROACH

**NOTES:**

INSTALL CENTERLINE STRIPING, TYPE D R-40

INSTALL FOG LINE STRIPING, TYPE W-2

INSTALL ROADSIDE DELINEATORS, TYPE 1,  
PER TM570

INSTALL INTERSECTION STRIPING & LEGENDS  
PER DETAIL SHEET




**ROAD  
DEPARTMENT**

PLAN:

STA "P" 0+00 to "P" 15+00

SHEET NO:

 5 of 28

DATE:

2/6/2025

SCALE:

N.T.S.

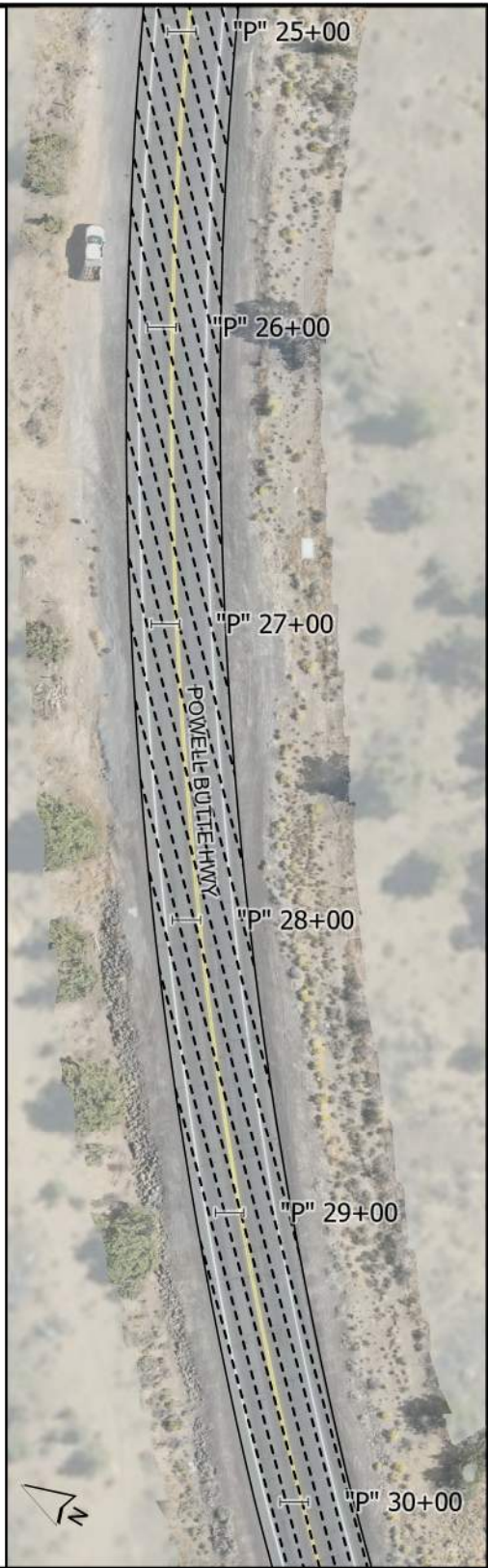
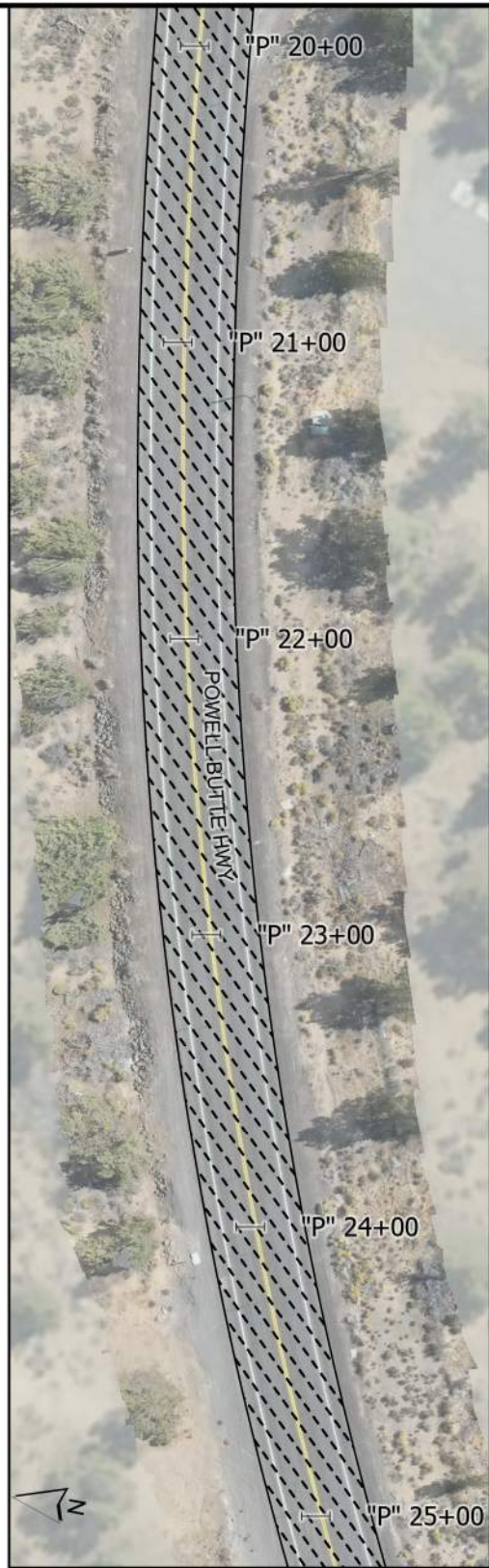
DRAFTER: R. PINKSTON,

B. WRUCK

REVIEWED BY: C. SMITH

**REVISIONS:**

-  UPDATE STATION NUMBERS
- CHANGE LAYOUT VIEW EXTENT



**LEGEND**

 3" INLAY, FULL-WIDTH  
(SEE TYPICAL SECTION, SHEET 2)

**NOTES:**

- INSTALL CENTERLINE STRIPING, TYPE D R-40
- INSTALL FOG LINE STRIPING, TYPE W-2
- INSTALL ROADSIDE DELINEATORS, TYPE 1, PER TM570


**REVISIONS:**

 UPDATE STATION NUMBERS



**ROAD DEPARTMENT**

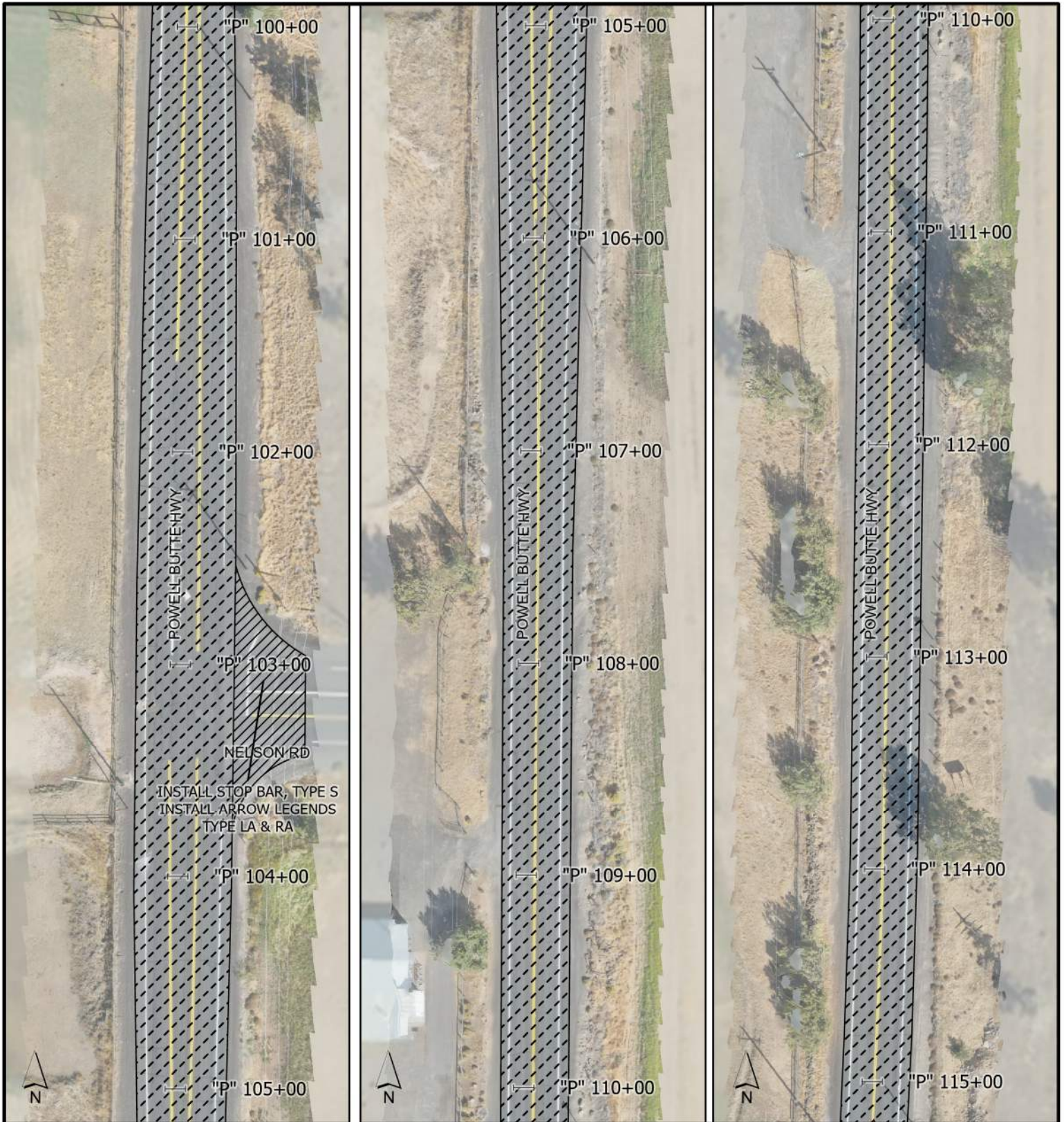
PLAN:  
STA "P" 15+00 to "P" 30+00

SHEET NO:  
 6 of 28

DATE:  
2/6/2025

SCALE:  
N.T.S.

DRAFTER: R. PINKSTON,  
B. WRUCK  
REVIEWED BY: C. SMITH



**LEGEND**

 3" INLAY, FULL-WIDTH  
(SEE TYPICAL SECTION, SHEET 2)

 ASPHALT APPROACH

**NOTES:**

INSTALL CENTERLINE STRIPING, TYPE D R-40

INSTALL FOG LINE STRIPING, TYPE W-2

INSTALL ROADSIDE DELINEATORS, TYPE 1,  
PER TM570

INSTALL INTERSECTION STRIPING & LEGENDS  
PER STANDARD DRAWINGS


INSTALL STOP AHEAD LEGEND ON NELSON  
RD ADJACENT TO EXISTING STOP AHEAD SIGN,  
SEE DETAIL SHEET

**REVISIONS:**  
 UPDATE STATION NUMBERS



**ROAD  
DEPARTMENT**


PLAN:  
 STA "P" 100+00 to "P" 115+00

SHEET NO:  
 11 of 28

DATE:  
 2/6/2025

SCALE:  
 N.T.S.

DRAFTER: R. PINKSTON,  
 B. WRUCK  
 REVIEWED BY: C. SMITH

ITEM NO.	SPEC SECTION	ITEM	UNIT	QTY	UNIT PRICE	AMOUNT
<u>Part 00200 - Temporary Features and Appurtenances</u>						
001	00210	Mobilization	LS	1	\$	\$
002	00221	Temporary Protecting and Direction of Traffic	LS	1	\$	\$
003	00222	Temporary Signs	SQFT	808	\$	\$
004	00222	Portable Changeable Message Signs	EACH	6	\$	\$
005	00223	Flaggers	HOUR	1448	\$	\$
006	00223	Pilot Cars	HOUR	256	\$	\$
007	00280	Inlet Protection, Type 3	EACH	2	\$	\$
<u>Part 00400 - Drainage and Sewers</u>						
008	00490	Adjusting Boxes	EACH	20	\$	\$
<u>Part 00600 - Bases</u>						
009	00620	Cold Plane Pavement Removal, 2.5 Inches Deep	SQYD	12775	\$	\$
010	00620	Cold Plane Pavement Removal, 3 Inches Deep	SQYD	66300	\$	\$
011	00640	Aggregate Shoulders	TON	2200	\$	\$
<u>Part 00700 - Wearing Surfaces</u>						
012	00744	Level 3, 1/2 Inch Dense ACP Mixture, PG 58-34ER	TON	14900	\$	\$
013	00744	Level 3, 3/8 Inch Dense ACP Mixture, PG 58-34ER	TON	2300	\$	\$
014	00748	ACP Shoulder Repair	SQYD	330	\$	\$
015	00749	Extra for Asphalt Approaches	EACH	8	\$	\$
<u>Part 00800 - Permanent Traffic Safety and Guidance Devices</u>						
016	00840	Delineators, Type 1	EACH	190	\$	\$
017	00855	Bi-Directional Yellow Type IAR Markers, Recessed 	EACH	616	\$	\$
018	00865	Thermoplastic, Sprayed, Surface, Non-Profiled	FOOT	155500	\$	\$
019	00867	Pavement Legend, Type AB: Arrows	EACH	15	\$	\$
020	00867	Pavement Legend, Type AB: Yield Line Triangle	EACH	24	\$	\$
021	00867	Pavement Legend, Type AB: Bicycle Lane Stencil	EACH	9	\$	\$
022	00867	Pavement Bar, Type AB	SQFT	180	\$	\$
023	00867	Pavement Legend, Type AB: Transverse Speed Reduction Marker	EACH	124	\$	\$
024	00867	Pavement Legend, Type AB: "STOP"	EACH	4	\$	\$
025	00867	Pavement Legend, Type AB: "STOP AHEAD"	EACH	2	\$	\$
<b>TOTAL BID:</b>						_____

<b>FOR DESCHUTES COUNTY USE ONLY</b>	
ADD _____	% FOR NON-RESIDENT BIDDER _____
TOTAL BID _____	

**REVISIONS:**  
 REVISE BID ITEM NAME