



Solid Waste Management Facility Siting

Solid Waste Advisory Committee (SWAC) Meeting

August 16, 2022

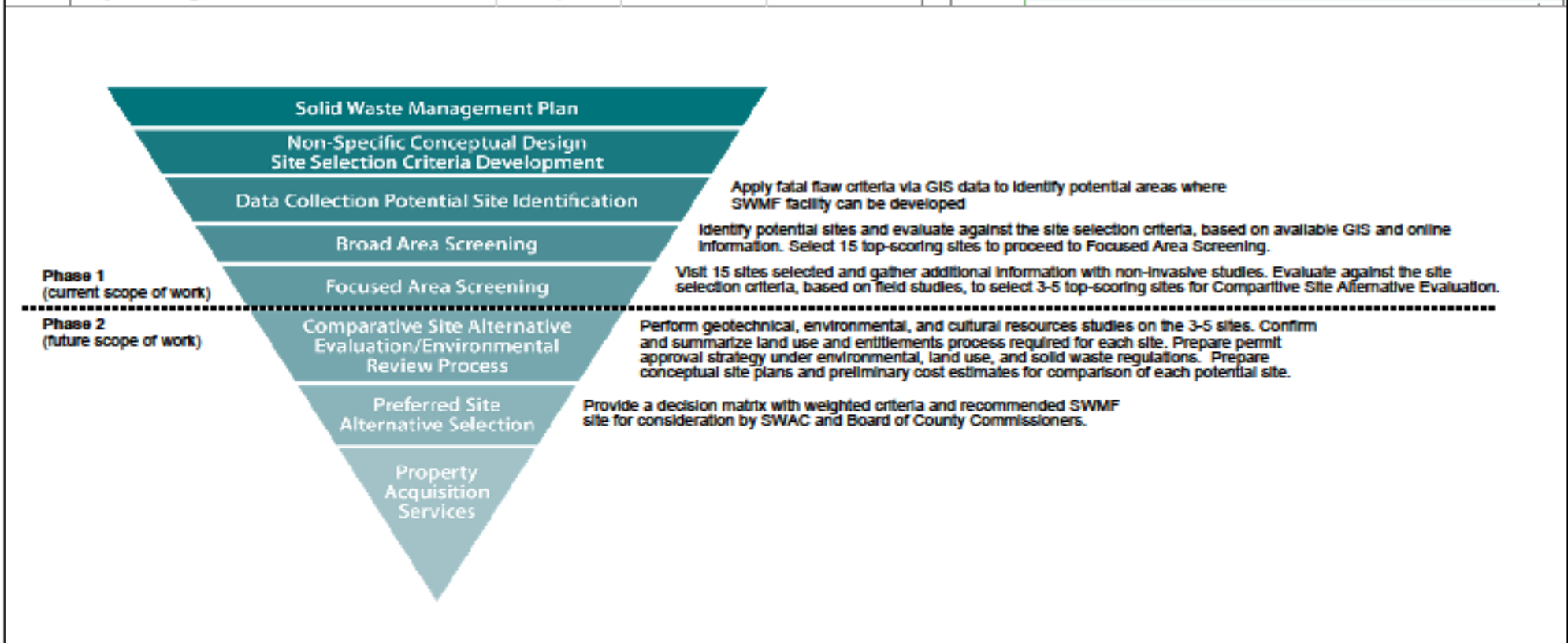




Agenda

1. Review/ Approve June Meeting Minutes
2. Public Comment
3. Criteria Update: Second Board meeting and final Technical Memorandum (sent to SWAC in July)
4. Application of Fatal Flaw Criteria – Identify Exclusionary Areas (presentation)
5. Communications Plan Update
6. Next Steps
7. Adjourn

Phase 1 Schedule (current scope of work)		Deschutes County Landfill Siting Study - Develop Short List of Sites																					
ID	Task Name	Duration	Start	Finish	2022																		
					Sep	Oct	Nov	Dec	Jan	Feb	Mar	Apr	May	Jun	Jul	Aug	Sep	Oct	Nov	Dec	2023		
1	Finalize Criteria	45 days	Mon 12/6/21	Fri 2/4/22																			
2	Refine Site Selection Process	155 days	Mon 12/6/21	Fri 7/8/22																			
3	Implement Site Selection Process	175 days	Mon 4/4/22	Fri 12/2/22																			
4	Facilitate Site Selection Process	330 days	Mon 12/6/21	Fri 3/31/23																			
5	Provide Public Outreach	157 days	Mon 1/31/22	Fri 3/31/23																			
6	Provide State and Local Entitlements Summary	155 days	Mon 12/6/21	Fri 3/31/23																			
7	Document Process	158 days	Mon 1/3/22	Fri 3/31/23																			
8	Project Management	330 days	Mon 12/6/21	Fri 3/31/23																			





Fatal Flaw/Exclusionary Area Criteria

1. Countywide exclusionary area (presenting today)
2. Site-specific fatal flaw criteria (applied at site identification and broad-site screening)
3. Many criteria require parcel-level review to identify fatal flaws:
 - Groundwater wells and protection areas
 - High-value farmland
 - Zoning
 - Wildlife zoning overlays
 - Cultural resources



Countywide Exclusionary Area Criteria

1. City Limits
2. UGB
3. Unincorporated Communities
4. Urban Reserve Area
5. Airport Buffers
6. Wetlands*
7. FEMA 100-Year Floodplain
8. Sage Grouse Core
9. Metolius ACSC
10. Holocene Fault Buffer
11. Steep Slopes
12. Federal Wilderness Areas



Countywide Exclusionary Area Criteria

ArcGIS Web Map



Communications Plan Update

- Continuing to provide outreach & information at County events:
 - County Fair
 - County College
 - State of the County
 - City Club
- Communications around key SWAC meetings - September 2022, December 2022, & March 2023, as the team continues narrowing the potential areas of the County for a site.
- Beginning more targeted outreach as focused area screening occurs in early 2023.
- Open House in April 2023, following March SWAC meeting when finalist sites are shared.



What's next?

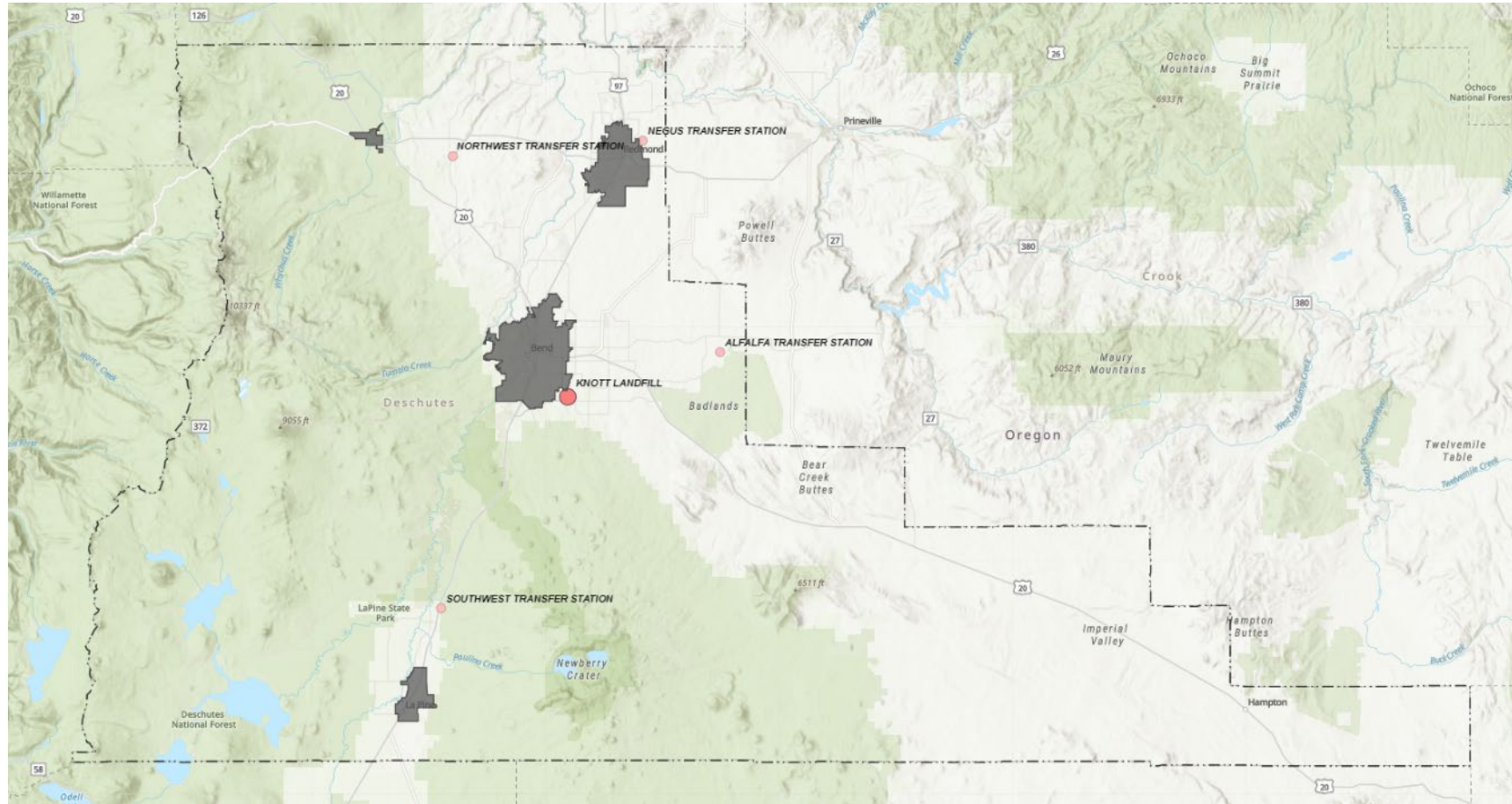
- Update project website, create FAQs, project fact sheets
- Initial site identification
- Broad site screening



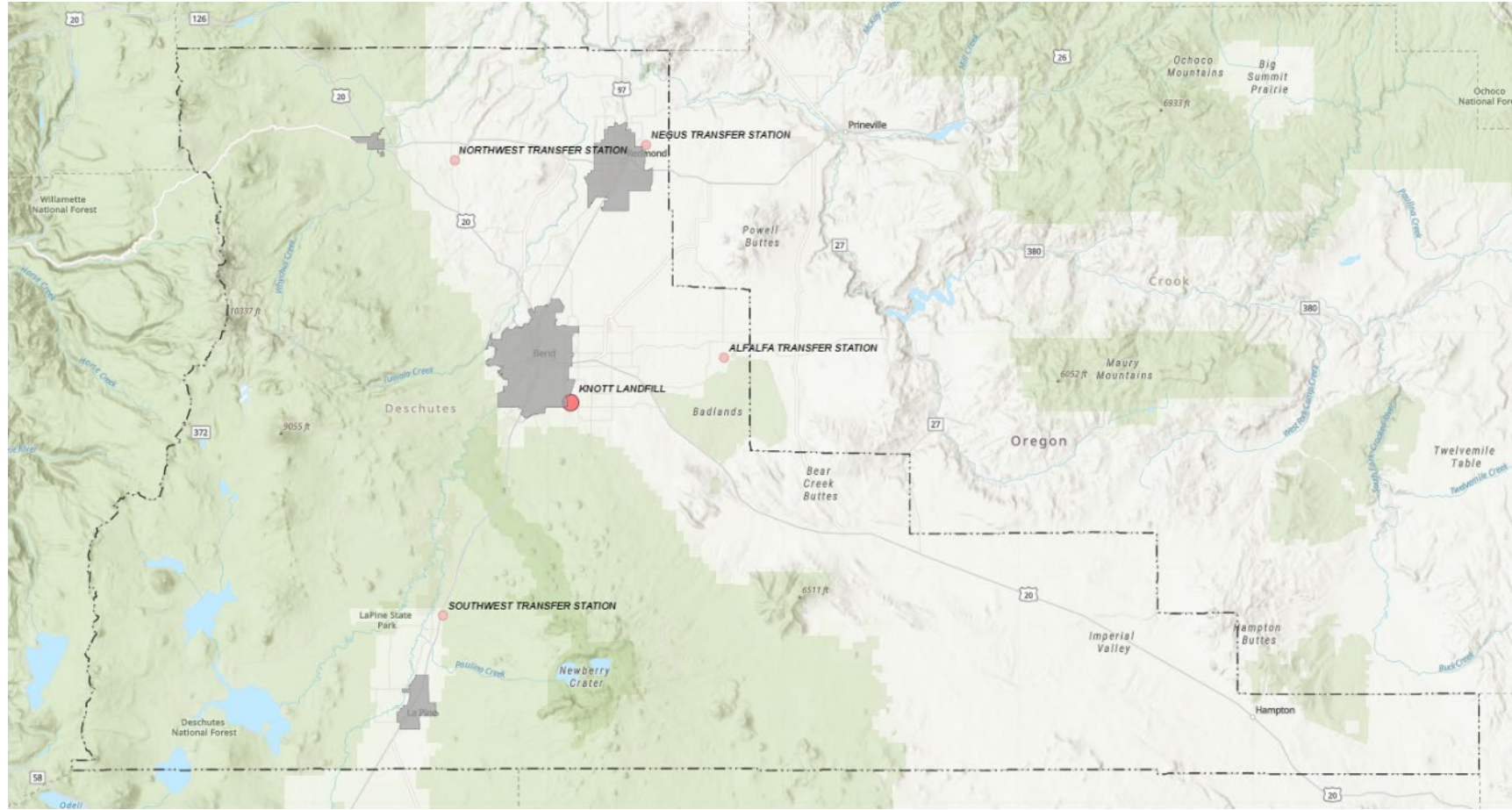
Countywide Exclusionary Area Criteria

ArcGIS Web Map - Slides

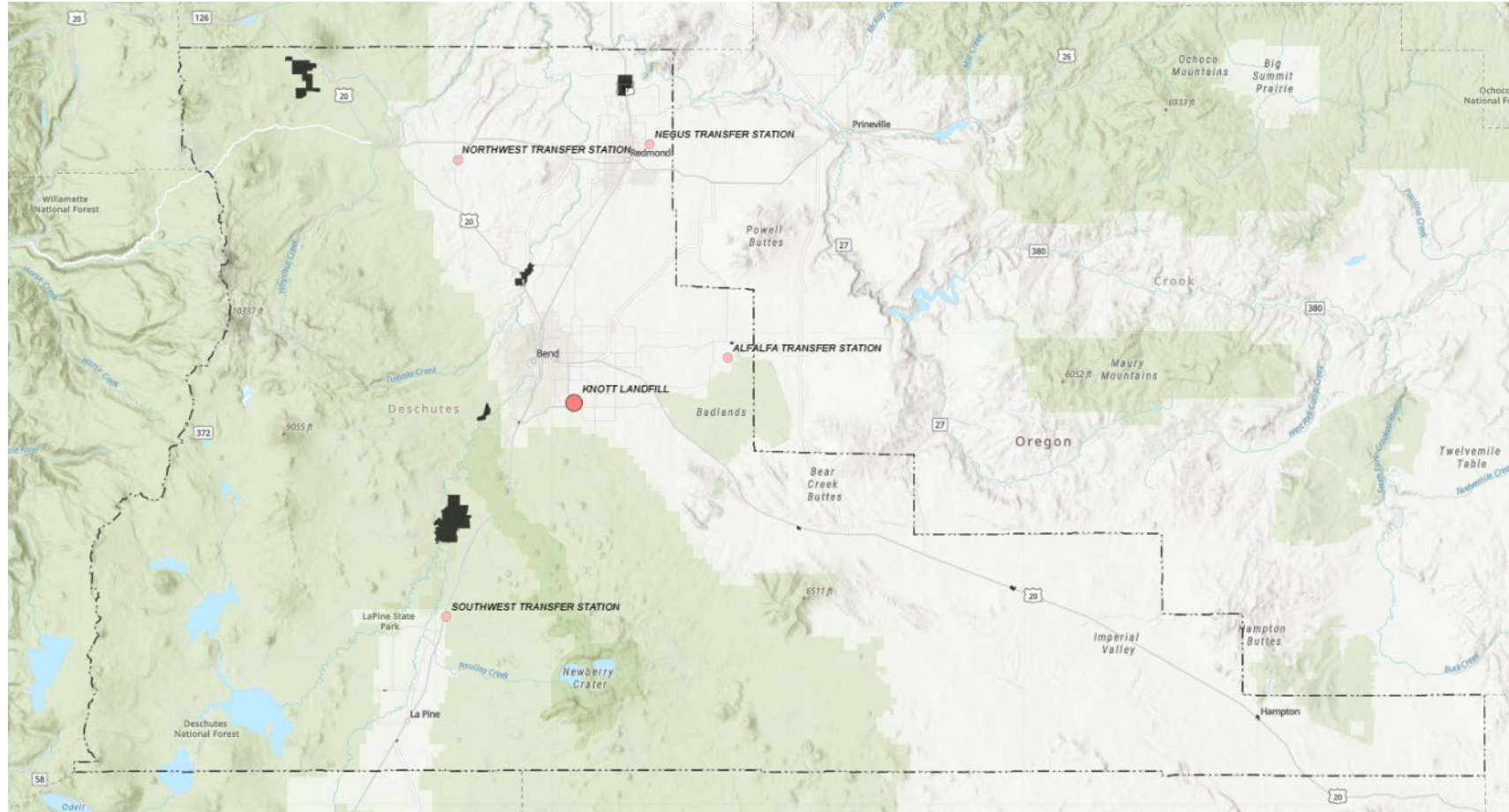
CITY LIMITS



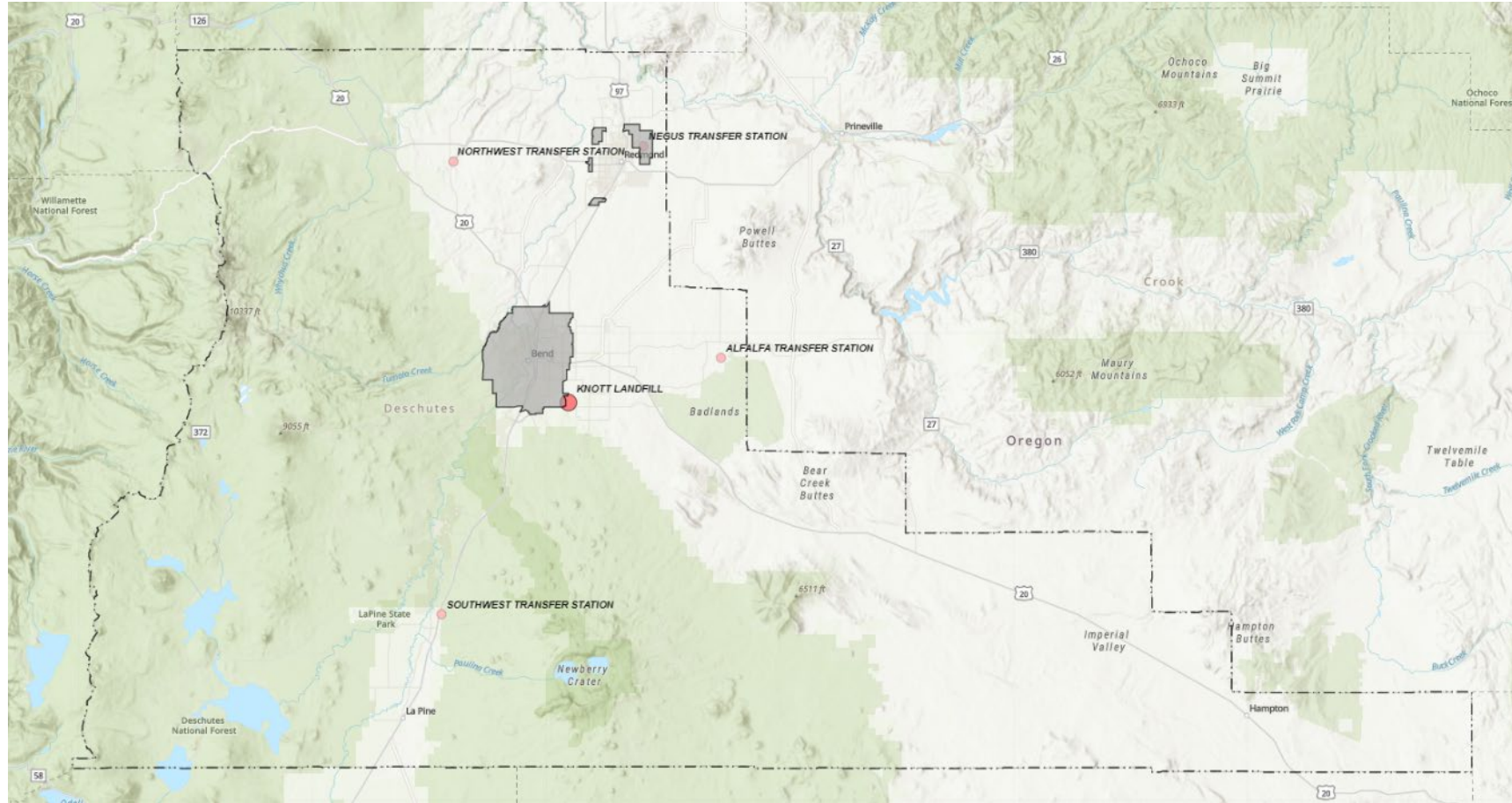
URBAN GROWTH BOUNDARIES



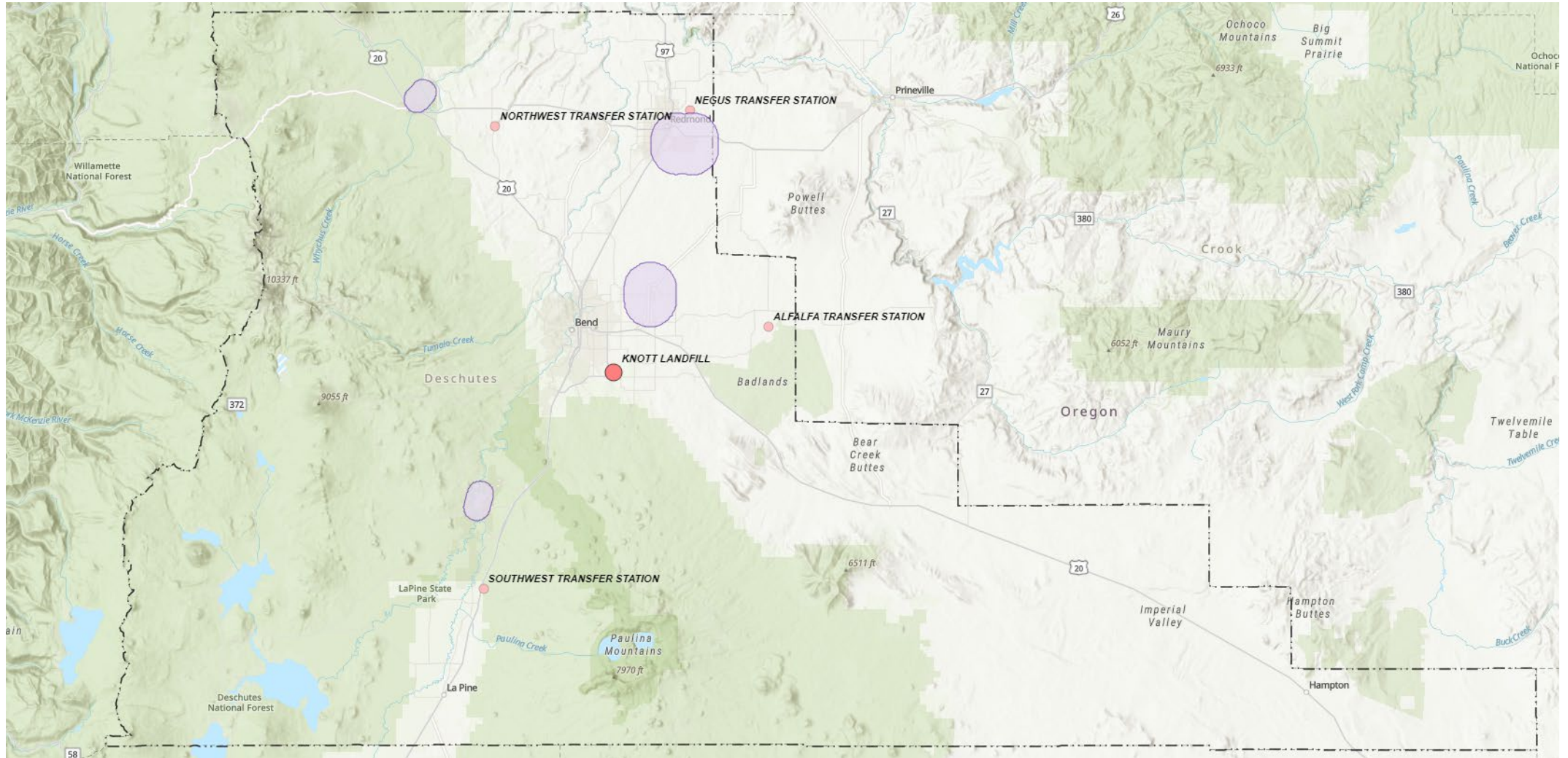
UNINCORPORATED COMMUNITIES



URBAN RESERVE



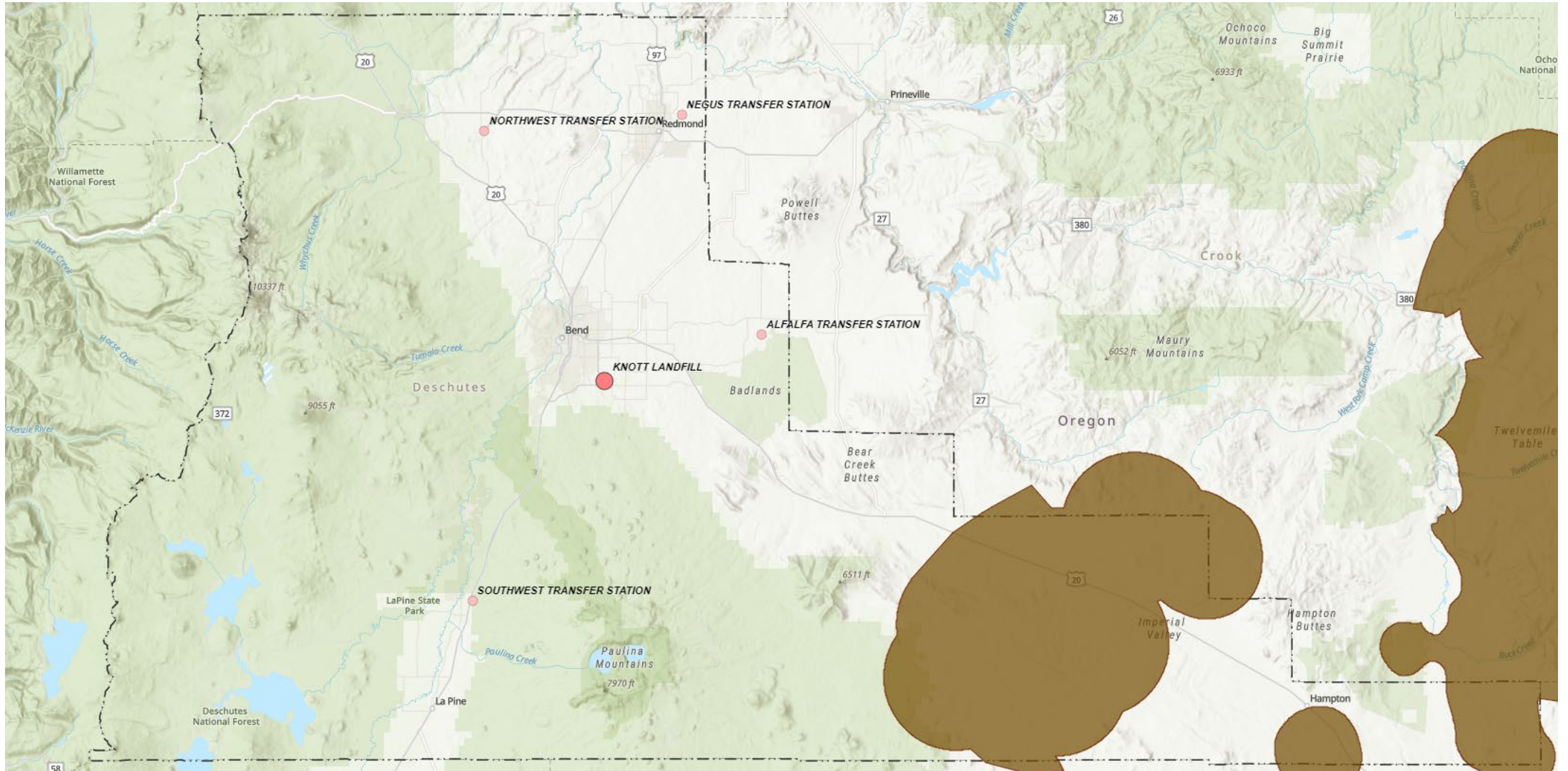
PUBLIC AIRPORTS



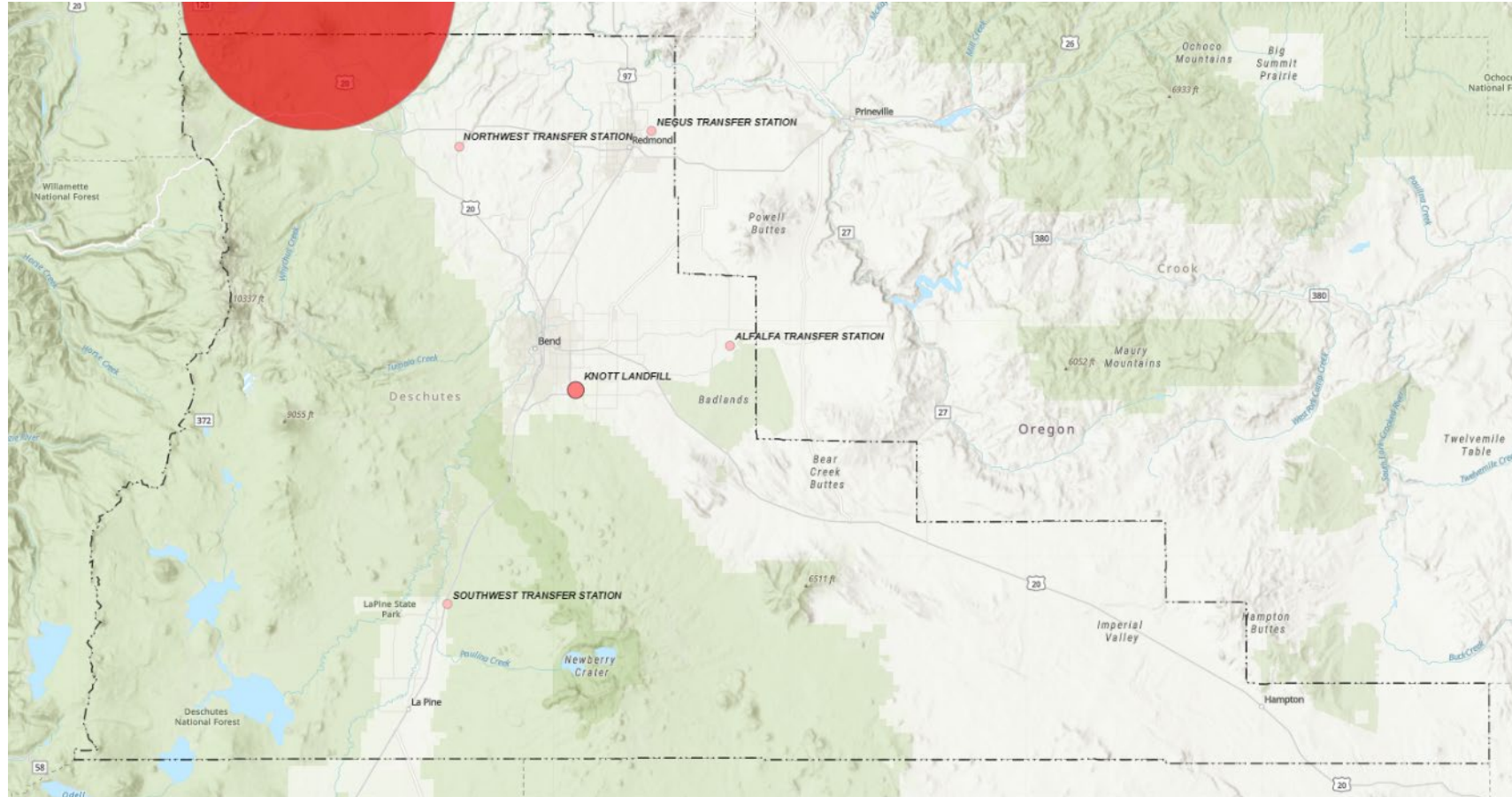
WETLANDS*



SAGE GROUSE CORE HABITAT



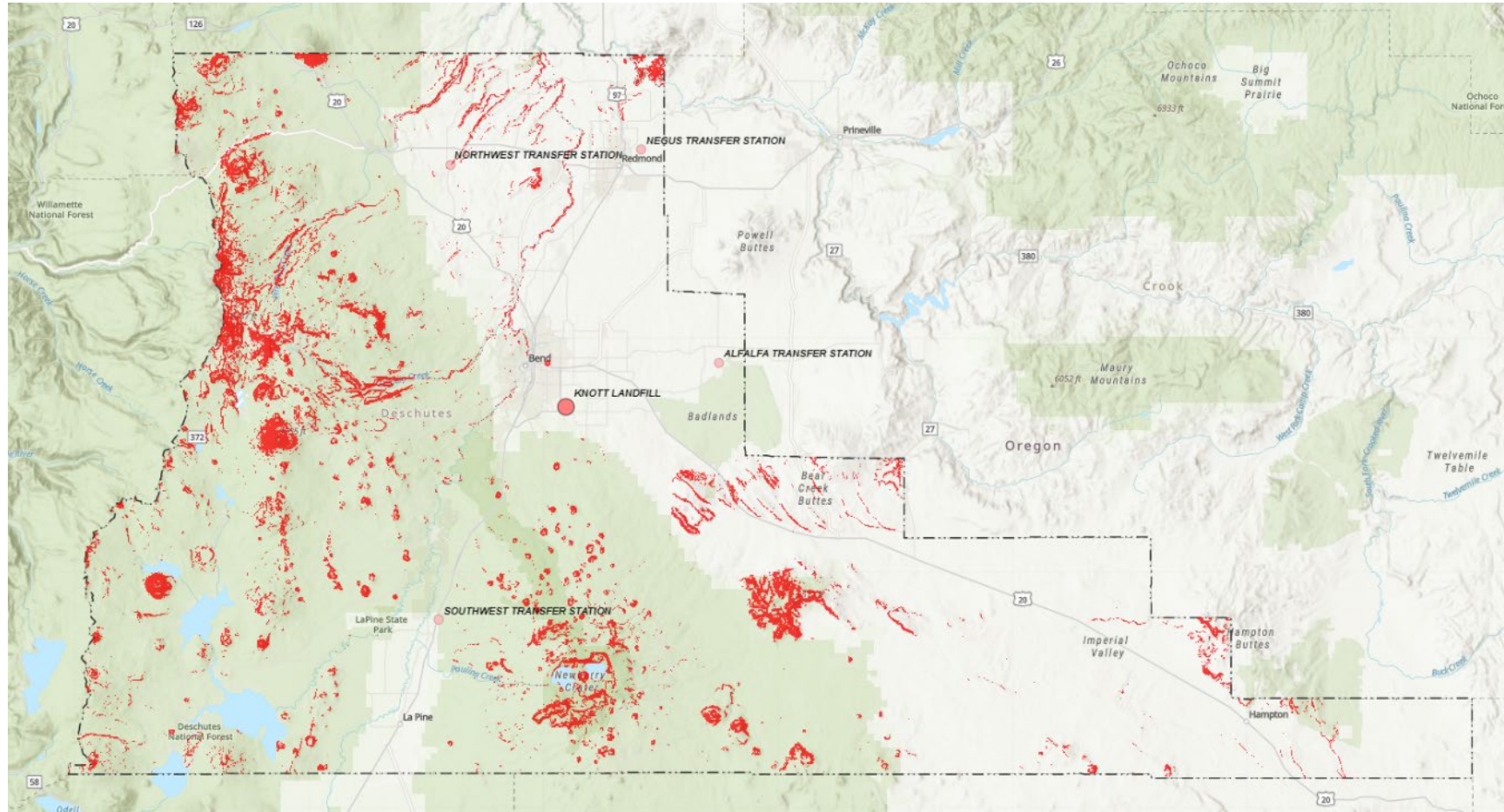
METOLIUS ACSC



HOLOCENE FAULTS



STEEP SLOPES



CONSOLIDATED EXCLUSIONARY AREAS

